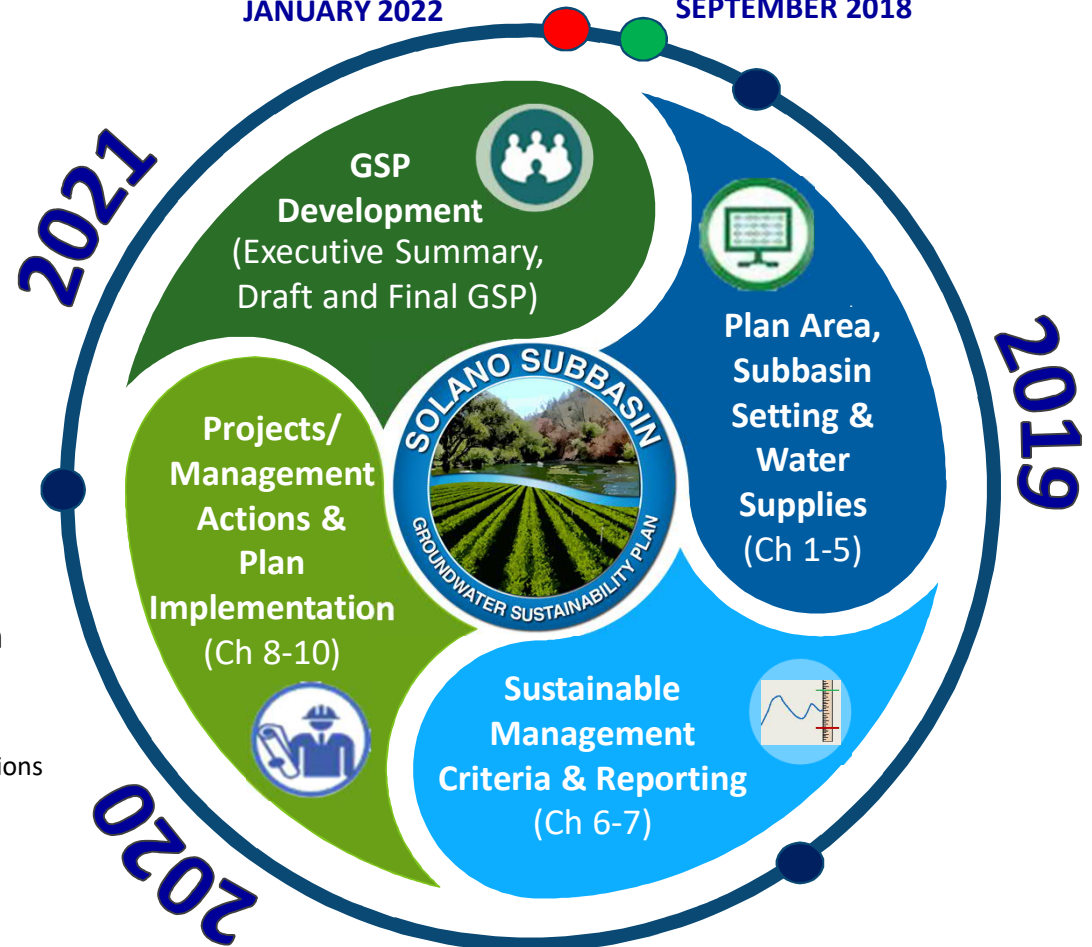


Solano Subbasin

Groundwater Sustainability Plan

SUBMIT GSP
JANUARY 2022

START GSP
SEPTEMBER 2018



Plan Area, Subbasin Setting & Water Supplies

- Jurisdictional areas
- Land Use Plans/General Plans
- Beneficial uses/users
- Existing water resources monitoring & management programs
- Communication & engagement plan
- Historical/current surface water/groundwater conditions
- Geologic setting & hydrogeologic characteristics
- Land uses & population trends
- Water supplies (historical/current/projected)
- Total Subbasin water uses
- Water budgets over long periods, including 50-year projection
- Existing monitoring networks, programs & protocols
- Identify data gaps & potential uncertainty

Sustainable Management Criteria & Reporting

- Subbasin sustainability goal
- Characterize/define undesirable results
- Future monitoring including representative wells
- Develop minimum thresholds & measurable objectives for applicable sustainability indicators
- Data management & reporting

Projects/Management Actions & Plan Implementation

- Projects & management actions to maintain/achieve sustainability
- Preliminary project list, cost estimates, & benefits
- Evaluate economic feasibility of selected projects/management actions
- Cost estimate & 20-year implementation schedule

GSP Development

- Draft GSP
- Public review & comment
- Final GSP