



THE STATE OF THE SOLANO SUBBASIN *WATER YEAR 2024

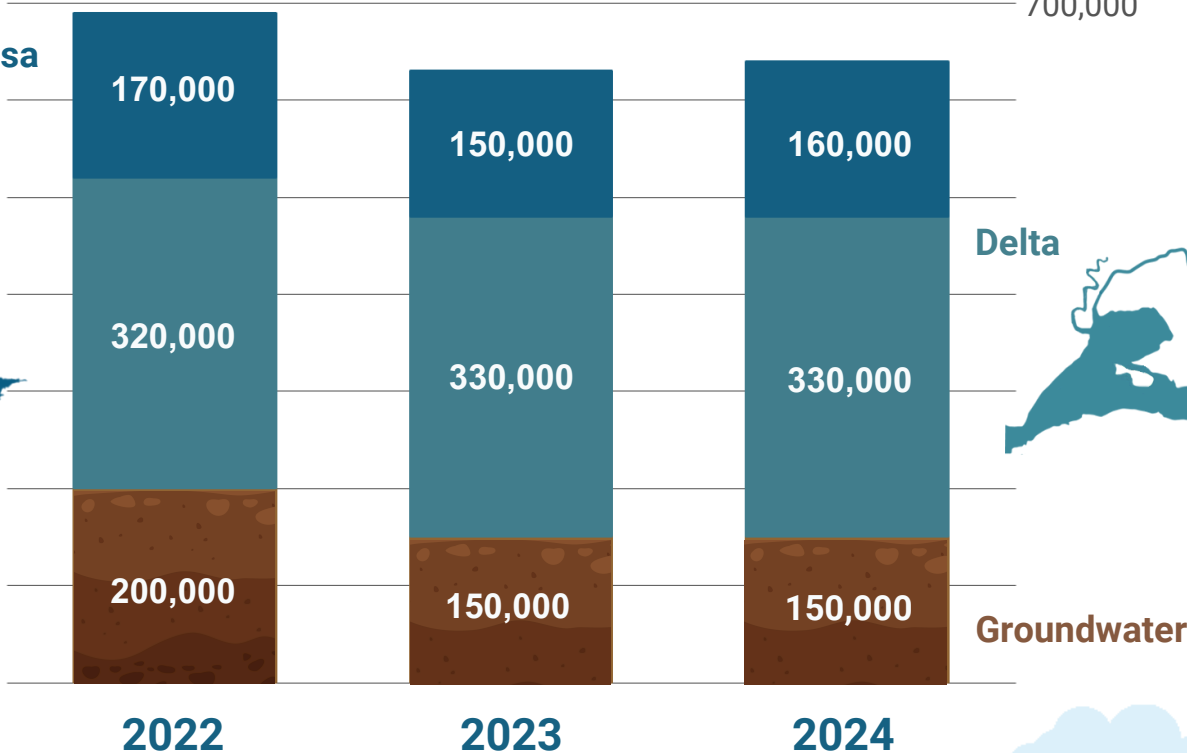
A snapshot of surface water and groundwater conditions in the Solano Subbasin.

*2024 Water Year refers to October 2023 through September 2024

Water Use in Acre Feet per Water Year

Lake Berryessa

700,000



Groundwater use hovers around 1/3 of the total water used in the subbasin. Water Year 2024 was a hotter and drier year; available surface water supplies reduced groundwater demand.

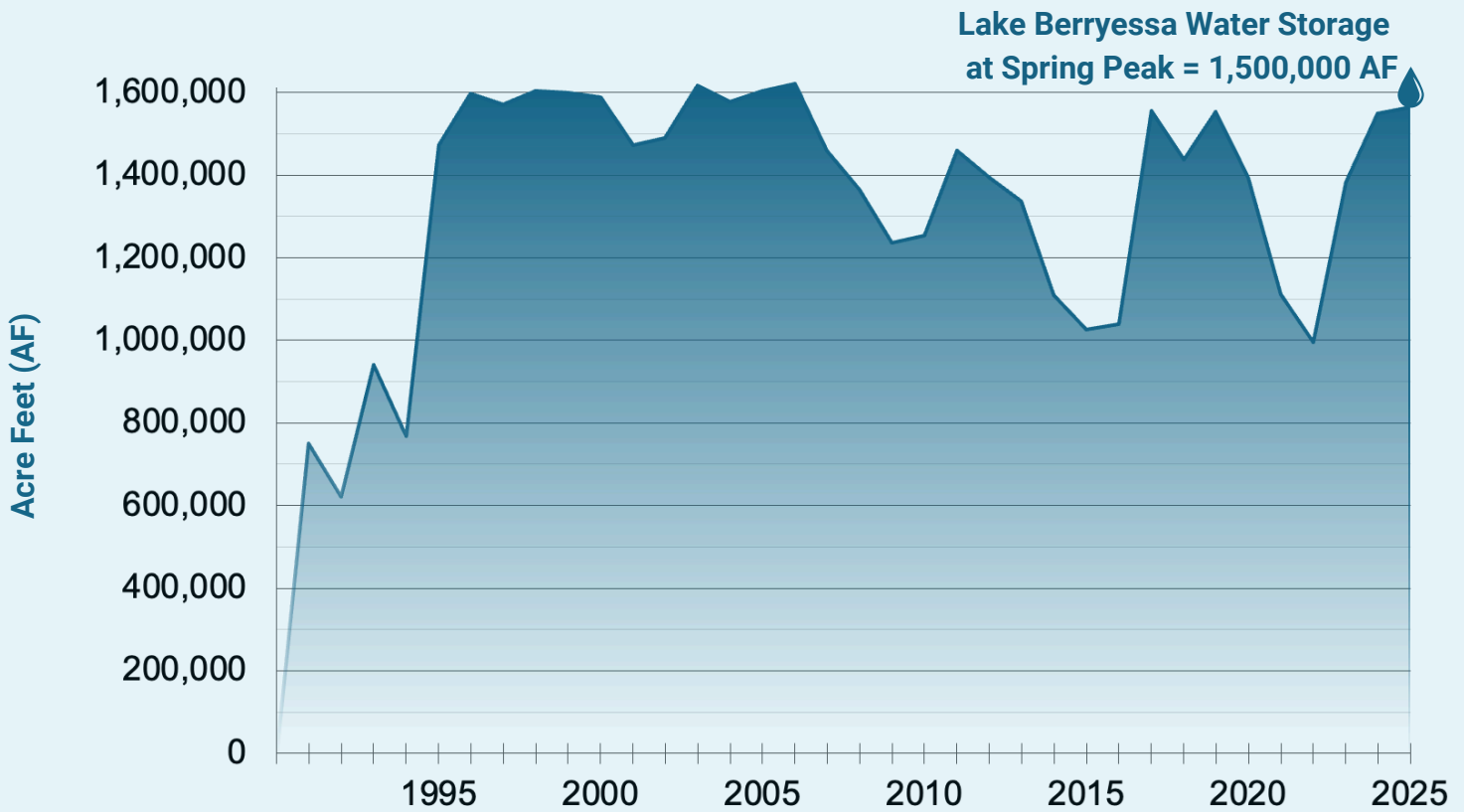
WORK TOWARD A SUSTAINABLE WATER FUTURE

- **Expanded Monitoring and Outreach** – Enhance monitoring to address data gaps and improve tracking. Continue to share information on groundwater conditions and water management.
- **Implementation Funding** – Support Sustainable Groundwater Management Act activities through coordination with local landowners, Resource Conservation Districts, and adjacent subbasins.
- **Multi-Benefit Project Planning** – Work with subbasin stakeholders to enhance water supplies, improve stormwater management, and increase resiliency.

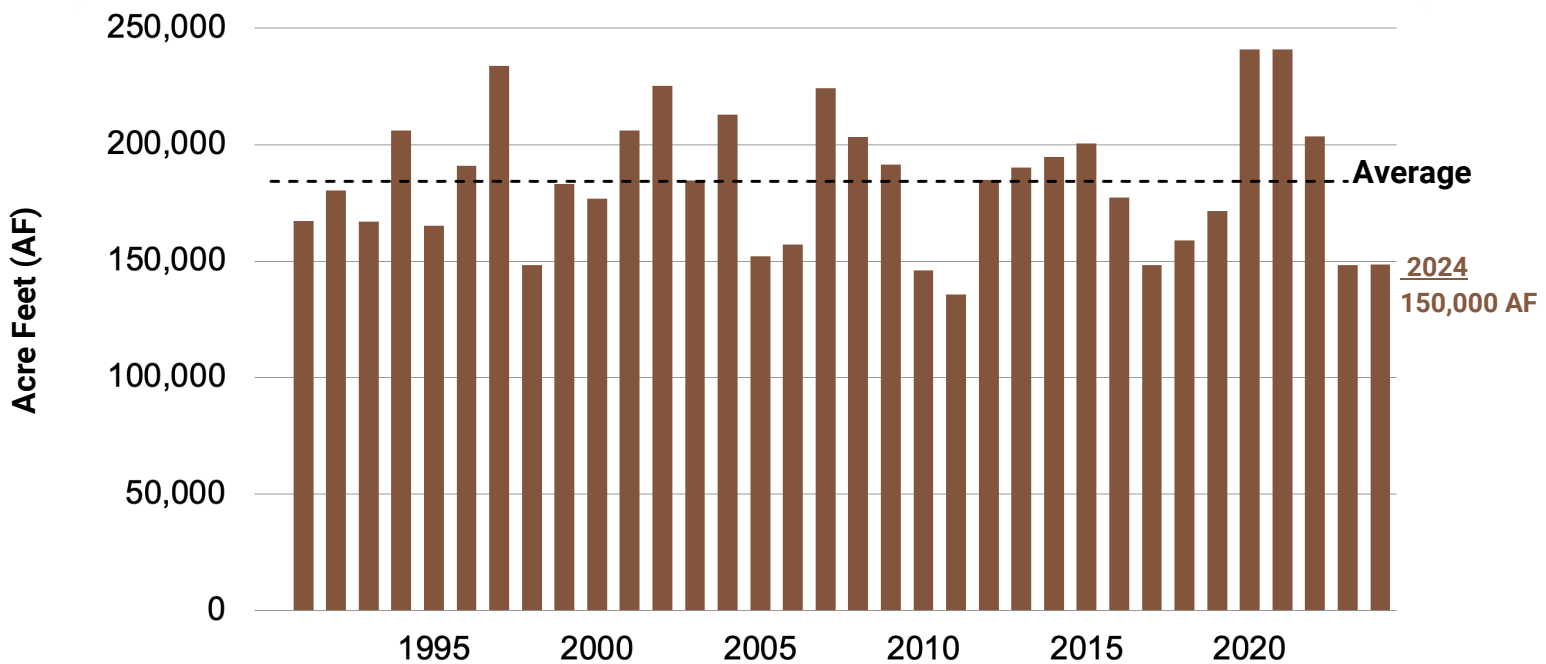
For more information access the [2024 Annual Report](#) or visit SolanoGSP.com

Para más información visite www.solanogsp.com/espanol/

TRENDS IN WATER STORAGE



GROUNDWATER PUMPING



The Solano Subbasin needs to continue to recharge and increase groundwater storage in key areas to sustain water supplies during future dry periods.

For more information access the [2024 Annual Report](#) or visit SolanoGSP.com

Para más información visite www.solanogsp.com/espanol/